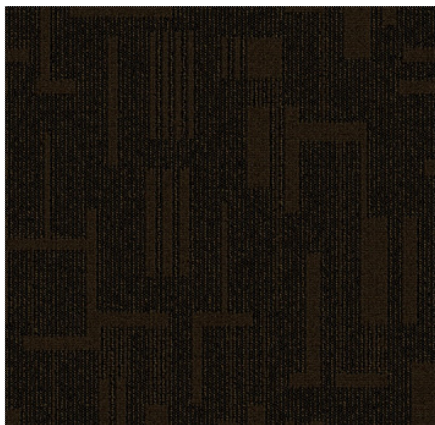


# OCCUPATION



180  
CONSTRUCTION BROWN



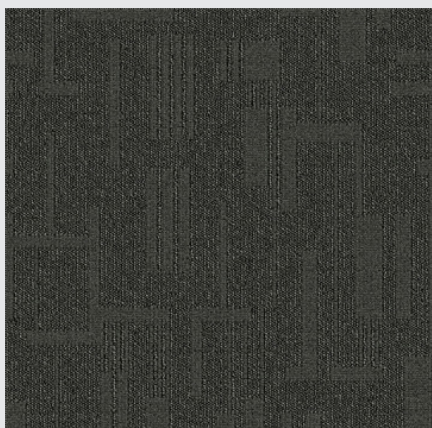
590  
FARMER'S TAUPE



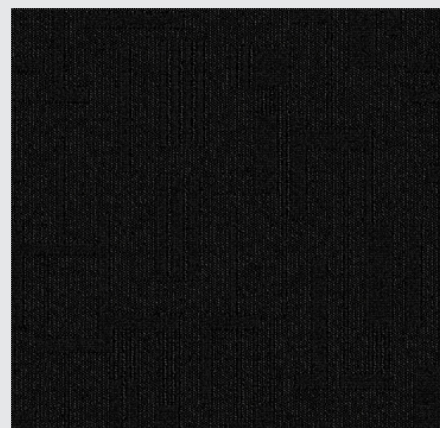
745  
CONTRACTOR NEUTRAL



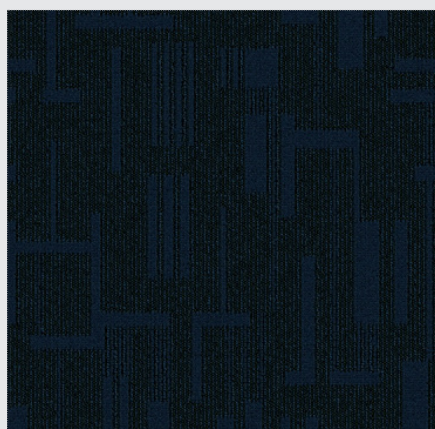
750  
ENGRAVER'S PLATE



770  
TAILOR GREY



792  
PRINTER'S INK



885  
PAINTER'S BLUE

Swatch colours are for guide purposes only.

## Technical Specifications

Country of Origin	Australia
Description	Patterned Loop Pile Carpet Tile
Colours	7 Standard
Yarn	100% Statron® Solution Dyed Nylon
Gauge	50.5/10cm (5/64th gauge)
Product Thickness	7mm (+/- 1.0mm)
Pile Weight	750g/m <sup>2</sup> (22oz/yd <sup>2</sup> )
Backing Structure	Enviro Bac® - Minimum 60% recycled content
Tile Size	500mm x 500mm
Availability Options	1000mm x 250mm - Skinny Planks <sup>^</sup> Enviro Bac Plus® - Cushion Backed Easy Grip™ - Adhesive Free Installation
Installation Method	1/4 Turn - Brick - Ashlar

## Performance

Anti-static	AATCC 134 <3.5 Kilovolts at 21°C & 20% Relative Humidity
Flammability <sup>#</sup>	CRF 8.6kW/m <sup>2</sup> (Direct Stick) Smoke Value 198% minutes
Colourfast to Light	6-7
Light Reflectance Values	Available on request
Stain Treatment	Stain Warden®
Biocontaminant Control	Bioshield® Antimicrobial Treatment
ACCS Rating <sup>#</sup>	Contract Extra Heavy Duty & Stairs #13086 Residential Extra Heavy Duty & Stairs
Gaurantee <sup>*</sup>	15 Year

## Sustainability

PVC Minimisation	100% PVC Free
Indoor Air Quality <sup>#</sup>	Green Building Council compliant for VOC emission rate limits
Product Stewardship	This product is recyclable and qualifies for take back at the end of life under the Godfrey Hirst Product Stewardship Program
Green Star	Environmental Certification Scheme (ECS) Level 4 Maximum Points - Certificate #13086
Accreditation	Manufactured under a quality, environmental and health and safety system certified and complying with ISO9001, ISO14001 and AS4801 by an accredited certification body.



<sup>#</sup>Test results and certificates are available on request. Specifications and colourations are subject to manufacturing tolerances. As part of Godfrey Hirst's continuous improvement program, Godfrey Hirst reserve the right to change the specifications of or delete colours of this product without notice. All Godfrey Hirst carpets must be installed in accordance with the latest AS2455 (Parts 1 & 2) and the Godfrey Hirst Carpet Installation Instructions. While all care is taken, product images may vary in colour due to possible printing process

variation. Images do not seek to duplicate the exact visual appearance, but serve merely as a guide or point of reference. <sup>\*</sup>This guarantee is in addition to any rights consumers may have under Australian consumer laws. Terms and conditions apply - for full information in respect to the scope of the guarantee please contact your Godfrey Hirst Account Manager or our Head Office.