

Inspired by nature, the **ZION+** collection offers free-flowing and harmonious carpet designs, to compliment any hospitality venue.

Feltex produce some of the finest woven carpets in the world. All Feltex Woven products are made from premium wools. Combining traditional weaving skills with state of the art technology, the Feltex Woven range of carpets will add an impressive touch to any project.

Feltex also provides a full custom design service. Our team of leading designers and product developers can create Feltex Woven carpets only limited by your imagination.

## ZION+ SPECIFICATIONS

### Technical Specifications

<b>Type</b>	Woven Axminster
<b>Pile Content</b>	80% Wool / 20% Nylon
<b>Pitch</b>	27.56/decimetre (7/10inch)
<b>Beat Up</b>	31.50/decimetre (8/10inch)
<b>Finished Pile Height</b>	7.0mm (+/- 1mm)
<b>Total Pile Weight</b>	1290g/m <sup>2</sup> (38oz/y <sup>2</sup> ) (+/- 5%)
<b>Width</b>	3.66 metres
<b>Flammability</b>	Critical Radiant Flux and Smoke Developed rate as per ISO9239 specification Cl, 10a is available upon request

### Pattern Match

Design Name	Pattern	Repeat (width x length)	Match
Quill	7429	182.88cm x 182.88cm	Half Drop
Babylon	8671	182.88cm x 99.06cm	Half Drop
Aura	7726	182.88cm x 172.72cm	Half Drop
Florette	6781	182.88cm x 193.04cm	Half Drop
Seasons	1784	182.88cm x 190.5cm	Half Drop
Damascus	8544	182.88cm x 157.48cm	Half Drop
Willow	1847	365.76cm x 217.17cm	Set Match
Raddiata	6790	91.44cm x 91.44cm	Half Drop
Zen	8675	91.44cm x 127cm	Set Match
Tiberian	8497	91.44cm x 134.62cm	Half Drop

### Sustainability

<b>Environment</b>	All Feltex Woven Products have been independently tested and certified as passing the standards for VOC emission levels as set out under ASTM D5116-97 and ISO/TC 219 Document N238*
--------------------	--

Specifications are subject to manufacturing variances. Material supply and/or manufacturing processes may necessitate specification changes without notice.  
All Feltex Woven products must be installed in accordance with AS2455 (Part 1 & 2) and in conjunction with the Feltex Woven Recommendations for installing woven carpet (as set out in the Feltex Woven Maintenance and Cleaning Guide) unless otherwise specified.  
\*Test results are available on request.

### How to order

For samples and sales, contact your local sales office or visit our website [www.feltex.com](http://www.feltex.com) [www.feltex.co.nz](http://www.feltex.co.nz)

### Head Office

**Melbourne**  
T 1300 130 239  
F 1800 654 595  
feedback@feltex.com

### Sales Offices

**Melbourne**  
12-14 Gilbertson Road  
Laverton North VIC 3026  
T +61 3 9316 4200

**Sydney**  
28 Percival Road  
Smithfield NSW 2164  
T +61 2 8784 8700

**Brisbane**  
Suite 4 / 1990 Logan Road  
Upper Mt Gravatt QLD 4122  
T +61 7 3349 8955

**Perth**  
Unit 1 / 62 Guthrie Street  
Osborne Park WA 6017  
T +61 418 780 043

**Adelaide**  
State Manager  
T +61 409 938 096

### International Offices

**New Zealand**  
84 Kerrs Road, Wiri  
Manukau City 2104  
Auckland, New Zealand  
T (freephone) 0800 100 008  
[www.feltex.co.nz](http://www.feltex.co.nz)

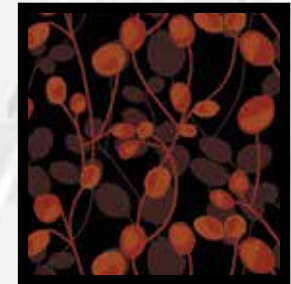
**Singapore**  
200 Jalin Sultan  
#07-310 Textile Centre  
Singapore 199018  
T +65 6841 5529



6790 Raddiata



1784 Seasons



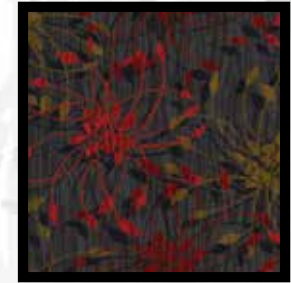
8671 Babylon



1847 Willow



7726 Aura



6781 Florette



8497 Tiberian



8675 Zen



7429 Quill



8544 Damascus



6781 Florette